



Latham Grand

# Fiberglass Pools


*latham*

Latham is the largest designer, manufacturer and marketer of in-ground residential swimming pools in North America, Australia and New Zealand with over six decades of experience at the center of the backyard lifestyle. Every day, families in North America, Europe and Australia enjoy the Latham pool experience. And each year, thousands more join them.

Latham is an established provider with a proven history of quality and customer satisfaction. When it comes to quality, selection, simplicity and support, Latham is The Pool Company.

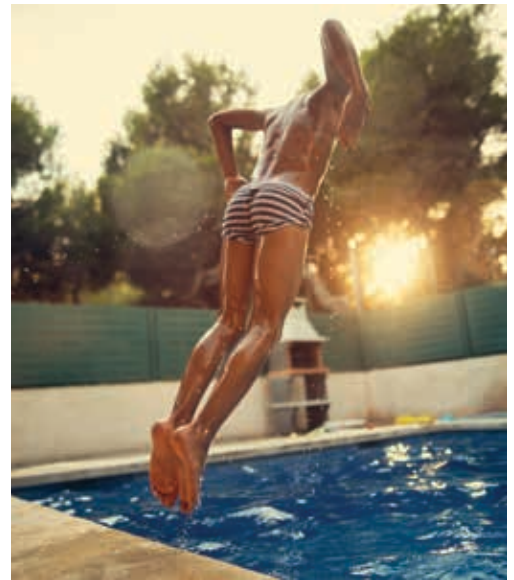
7	Benefits of a Fiberglass Pool
8	Buying Your Pool
<hr/>	
11	Your Pool: Shapes and Sizes
12	Rectangle
24	Freeform
34	Kidney
36	Spas
40	Tanning Ledges
<hr/>	
45	Your Way: Features and Customization
46	Finishes
48	LED Lighting
49	Perimeter and Inlaid Tiles
50	Water Features
51	Ledges, Steps and Seats
<hr/>	
53	Your Facts: Safety and Education
54	Pool Covers
56	Safety Tips





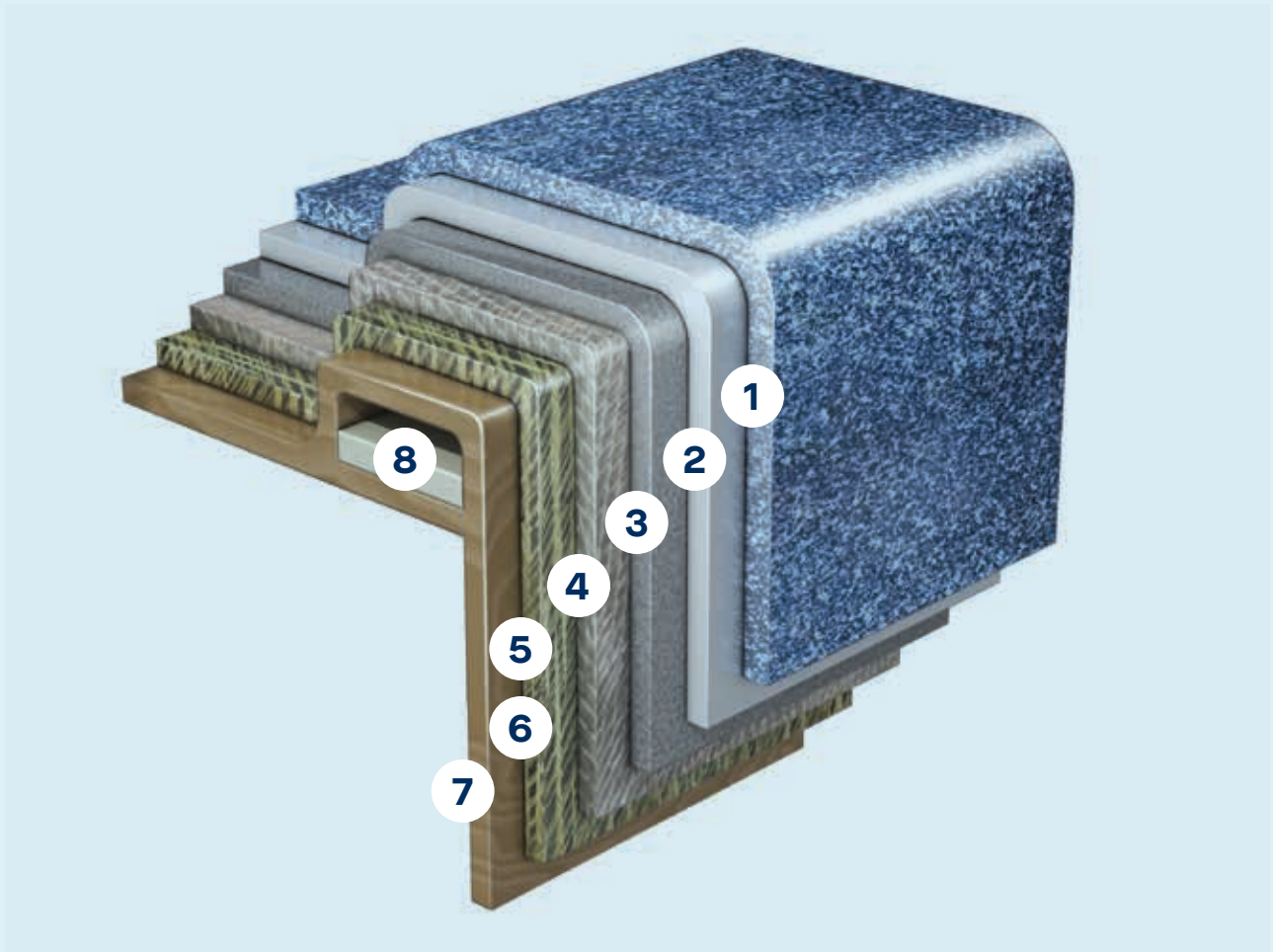
# The Center of Your Backyard Lifestyle

A cool plunge into a Latham pool to wake up with the dawn. The steady rhythm of laps relieving the stresses of the day. Cocktails with friends as the sun goes down. Or the laughter of your kids as they cannonball into the deep end.



A pool is more than a place to relax and revive. It transforms a backyard into a welcoming extension of the home, offering a new focus of entertainment throughout the day.





## Fiberglass by Latham

Latham's Advanced Composite Technology was developed with intensive research and testing, making Latham fiberglass pools easier to handle and install. Latham fiberglass is stronger, more rigid and more durable. It is built better and backed better, with the best warranties in the industry.

1. **Crystite Gelcoat** – Engineered and built for fade, stain and scratch resistance, our gelcoat has been offering the industry's most beautiful and durable swimming pool surface in its most popular colors for over 25 years. And now you can enjoy the radiance of our exclusive G3 finishes, adding an extra sparkle to your pool.
2. **Vinyl Ester Resin** – Our resins are designed for corrosion and impact resistance, flexibility, strength and durability.
3. **Advanced Ceramic Construction** – Ceramic-infused resin provides increased stiffness.

4. **BiMax Radius Reinforcement** – The tight weave and direction of the fibers within this material add tremendous strength to the pool shell.
5. **Carbon-infused Technology** – Carbon fibers have the highest compressive strength of all reinforcing materials, and are found in automobiles, boats, yachts, airplanes—and spaceships!
6. **Aramid Fibers** – Developed for demanding industrial and advanced-technology applications, Aramid Fibers combines high strength, toughness and thermal stability.
7. **Woven Roving and Marine-grade Resin** – Woven roving dramatically reinforces the strength of the pool shell.
8. **Closed Reinforced Beam Construction** – Our unique closed reinforced beam construction creates unparalleled strength and rigidity.



There are many reasons why fiberglass pools are the fastest growing segment of the pool industry. When you know the facts, a fiberglass pool from Latham will be your choice as well.

**Fiberglass pools are easier and faster to install**

They are assembled off-site and can be installed in three to six weeks. Concrete pools take three to six months to install and the work needs to be done in moderate weather, with ideal temperatures and without rain or snow.

**Fiberglass pools are easier and less costly to maintain**

Fiberglass pools have a gel coat that resists algae growth; this makes keeping the pool clean easier and not as costly. Vinyl liner pools need to have their liners replaced, usually between seven to eleven years, while concrete pools need to be acid-washed every few years and sometimes resurfaced. None of these tasks will be necessary with a fiberglass pool.

**Fiberglass pools are easier and less costly to repair**

Fiberglass pools have the lowest long-term maintenance costs and come with a limited lifetime warranty.

**Fiberglass pools have non-abrasive surfaces**

The gel coat of a fiberglass pool does more than resist algae growth—it makes it very smooth to the touch. You won't get scratches on your extremities as you would in a concrete pool.

**Fiberglass pools are better for saltwater systems**

Saltwater pools are a growing trend that is great for customers and the environment. But, while all saltwater pools must maintain proper water chemistry for effective sanitation and bather comfort, the systems are very hard on concrete surfaces and many concrete pool builders prohibit them. Fiberglass is the material many sea-going boats and yachts are made with and fiberglass pools are completely saltwater friendly.

**Building permits are easier with ICC certification**

An International Code Council Evaluation Service (ICC-ES) Certification brings you one step closer to obtaining building permits for your pool. Only the highest quality products receive the ICC-ES stamp of approval. Latham pools are among them.

**Limited Lifetime Warranty**

A Latham pool is built to last a lifetime—a lifetime of carefree ownership and peace of mind. A Latham pool comes with a limited lifetime warranty on the structure and surface of the pool. By selecting a Latham pool you will automatically enjoy the benefits of having a well-established leader in the swimming pool industry behind you every step of the way.



Buying a pool should be fun and exciting. At Latham, we want to make it as easy as possible for you by walking you through the process and providing the information you need to make informed decisions.



### **How will you use your pool?**

How do you imagine it enhancing your life? Will you be swimming laps every morning? You might want to spend sunlit days lounging poolside with your favorite music streaming through hidden speakers, or to decompress in the evenings with the stars reflected in the water and a glass of wine in your hand. Perhaps you envision hosting family birthday and holiday pool parties.

### **How much room do you have for your pool?**

How large is the environment in which your pool will be installed, and how much of it do you want devoted to your pool? Your pool will be the center of your backyard lifestyle, but what does that translate to in feet and construction materials? Working with an experienced builder, you will determine which size pool and what materials suit your needs best.

### **What's your style and how can your pool express it?**

Some might find comfort in a more traditional backyard, while others are drawn to the avant-garde. Some might want a pool that blends into its surroundings while others might want one that stands out. There are no wrong answers. What is important to remember is that the design of your pool should work with your backyard and the home in front of it.

### **What's your budget?**

Consider how much you can spend on your pool, including the costs of the pool itself, accessories and installation. And remember—you are also buying an investment in endless fun and family entertainment.





# Your Pool: Shapes and Sizes

The fun starts when you decide to buy a pool. Which one will be the best match for your outdoor lifestyle? How will you use it? What works for you? With a Latham custom fiberglass pool, your options are almost limitless. Do you like the classic rectangular shape of a straight-edged pool, or is a more organic, curved design a better fit? What size is right?

Finding the ideal pool is a very personal, highly specific process. With over six decades of experience, we know that you'll be confident in the process and delighted by the outcome.

NEW IN 2025

### Apollo 14

**14' x 32'**

Depth: 3' 7" to 6' 1"

Ships from CA, NC, OK, KN



NEW IN 2025

### Ariel 16

**16' x 40'**

Depth: 3' 6" to 7' 4"

Ships from CA, NC, OK, KN



### Astoria 14

**14' x 35'**

Depth: 3' 6" to 6' 6"  
Spa: 3'

Ships from CA, FL, NC, OK, KN



### Astoria 16

**15' 10" x 40'**

Depth: 3' 6" to 7'  
Spa: 3'

Ships from CA, IA, LA, NC, KN,  
TN, WV



### Barcelona

**16' x 37' 10"**

Depth: 3' 6" to 7'

Ships from CA, IA, LA, NC, OK,  
TN, WV





Apollo 14  
Classic Shale Gray

Ariel 16  
Crystal Pearl White



Astoria 16  
Crystal Night Sky

## Claremont

**14' x 33'**

Depth: 3' 7" to 5' 4"

Ships from CA, FL, IA, LA, NC, OK, KN, TN, WV



## Corinthian 12

**12' x 25'**

Depth: 3' 6" to 5' 5"

Ships from CA, FL, LA, NC, OK, KN, TN, WV



## Corinthian 14

**14' x 30'**

Depth: 3' 6" to 6'

Ships from CA, FL, IA, LA, NC, OK, KN, TN, WV



## Corinthian 16

**15' 10" x 40'**

Depth: 3' 6" to 7'

Ships from CA, IA, LA, NC, OK, KN, TN, WV



## Delray

**11' 10" x 25' 5"**

Depth: 4' 6"

Ships from CA, FL, NC, OK, WV







Corinthian 16  
Classic Sapphire Blue



Delray  
Classic Sapphire Blue

## Enchantment 9.17

**9' 1" x 17' 5"**

Depth: 4' 9"

Ships from CA, FL, KN



## Enchantment 9.21

**9' 1" x 20' 7"**

Depth: 4' 9"

Ships from CA, FL, KN



## Enchantment 9.24

**9' 1" x 23' 10"**

Depth: 4' 9"

Ships from CA, FL, KN



## Kingston

**16' x 38'**

Depth: 3' 6" to 5' 10"

Ships from CA, IA, NC, OK, KN,  
TN, WV





Enchantment 9.21  
Crystal Sapphire Blue



Kingston  
Classic Sapphire Blue

## Lake Shore

**16' x 33'**

Depth: 3' 7" to 5' 5"

Ships from IA, WV



## Milan

**10' x 16'**

Depth: 4'

Ships from CA, FL, LA, NC, OK,  
KN, TN, WV



## Monaco

**16' x 40'**

Depth: 3' 6" to 8'

Ships from CA, IA, NC, OK, KN,  
TN, WV

Type 1 Diving Pool\*



Lengths, widths, and depths may vary up to 3%. Measurements are to widest point on each side of the outside edge. Unless indicated otherwise, pools are non-diving and use of diving equipment is prohibited.

\*Diving/sliding equipment shall be designed for swimming pools and shall be installed in accordance with the diving/sliding equipment manufacturer's specifications. Please contact the diving/sliding equipment manufacturer for their specifications.



Lake Shore  
Classic Shale Gray



Monaco  
Classic Sapphire Blue



Milan  
Classic Sapphire Blue

## Olympia 12

**12' x 26'**

Depth: 3' 6" to 5' 8"

Ships from CA, FL, IA, LA, NC, OK, KN, TN, WV



## Olympia 14

**14' x 30'**

Depth: 3' 6" to 6'

Ships from CA, FL, IA, LA, NC, OK, KN, TN, WV



## Olympia 16

**16' x 35'**

Depth: 3' 6" to 6' 4"

Ships from CA, FL, IA, LA, NC, OK, KN, TN, WV



## Sirius

**12' x 24'**

Depth: 3' 6" to 5' 6"

Ships from KN



## St. Thomas

**14' x 31' 6"**

Depth: 3' 7" to 7'

Ships from CA, IA, LA, NC, OK, KN, TN, WV





Olympia 12  
Classic Ocean Blue



Olympia 14  
Classic Ocean Blue



Olympia 16  
Crystal Ocean Blue



St. Thomas  
Classic Ocean Blue

## Tuscan 11.20

**11' 1" x 20' 3"**

Depth: 3' 11" to 5' 2"

Ships from CA, FL, NC, OK, KN



## Tuscan 13.24

**12' 10" x 23' 7"**

Depth: 3' 11" to 5' 5"

Ships from CA, FL, NC, OK



## Tuscan 14.27

**13' 9" x 26' 10"**

Depth: 3' 11" to 5' 9"

Ships from CA, FL, IA, LA, NC, OK, TN, WV, KN



## Tuscan 14.30

**13' 9" x 30' 1"**

Depth: 3' 11" to 5' 11"

Ships from CA, FL, WV, KN



## Tuscan 14.40

**13' 9" x 39' 11"**

Depth: 3' 7" to 6' 2"

Ships from FL, WV







Tuscan 11.20  
Classic Coastal Bronze



Tuscan 13.24  
Classic Ocean Blue



Tuscan 14.27  
Classic Shale Gray



Tuscan 14.40  
Classic Sapphire Blue



## Aruba

**11' x 22'**

Depth: 3' 6" to 5'

Ships from CA, FL, LA, NC, OK,  
KN, TN, WV



## Axiom 12

**12' x 26'**

Depth: 4' to 5'

Ships from TN



## Axiom 12 Deluxe

**12' x 26'**

Depth: 3' to 4' 7"

Spa: 3'

Ships from NC



## Axiom 14

**14' x 30'**

Depth: 4' to 6'

Ships from CA, FL, IA, LA, NC,  
OK, KN, TN, WV



## Axiom 16

**16' x 35'**

Depth: 4' 6" to 6' 6"

Ships from CA, IA, LA, NC, OK,  
KN, TN, WV





Aruba  
Classic Shale Gray



Axiom 12  
Classic Ocean Blue



Axiom 14  
Crystal Ocean Blue



Axiom 16  
Classic Coastal Bronze

## Bay Isle

**14' 6" x 29' 10"**  
 Depth: 3' to 6' 6"  
 Ships from FL, WV



## Bermuda

**12' x 26'**  
 Depth: 3' 6" to 5' 6"  
 Ships from CA, FL, IA, LA, NC,  
 OK, KN, TN, WV



## Cambridge

**16' x 36'**  
 Depth: 3' 6" to 7'  
 Ships from NC, WV





Bay Isle  
Crystal Ocean Blue



Bermuda  
Classic Sapphire Blue



Cambridge  
Classic Sapphire Blue

## Cancun

**16' x 35'**

Depth: 3' 6" to 6' 6"

Ships from CA, LA, NC, OK, KN, WV



## Cancun Deluxe

**16' x 35'**

Depth: 4' 3" to 6' 6"

Spa: 3'

Ships from CA, LA, NC



## Cape Cod

**14' x 31'**

Depth: 3' 6" to 6'

Ships from NC, WV



## Caribbean

**16' x 40'**

Depth: 3' 6" to 6' 6"

Ships from CA, NC, OK, KN, WV



**NEW IN 2025**

## Coral 16

**16' x 30' 10"**

Depth: 3' 6" to 6' 11"

Ships from CA, NC, OK, KN





Cancun  
Classic Sapphire Blue



Cancun Deluxe  
Classic Sapphire Blue



Caribbean  
Classic Ocean Blue



Coral 16  
Classic Sapphire Blue

## Coronado

**15' x 34'**

Depth: 3' 6" to 6' 6"

Ships from FL, NC, WV



## Fiji

**15' x 34'**

Depth: 3' 6" to 6'

Ships from CA, IA, LA, NC, OK, TN, WV



## Genesis

**16' x 40' 2"**

Depth: 3' 10" to 8' 6"

Ships from IA, TN, WV

Type 1 Diving Pool\*



## Java

**12' x 26' 9"**

Depth: 3' 6" to 5' 5"

Ships from CA, FL, NC, WV



## Key West

**12' x 25' 7"**

Depth: 3' 7" to 6'

Ships from CA, FL, NC, OK, WV



Lengths, widths, and depths may vary up to 3%. Measurements are to widest point on each side of the outside edge. Unless indicated otherwise, pools are non-diving and use of diving equipment is prohibited.

\*Diving/sliding equipment shall be designed for swimming pools and shall be installed in accordance with the diving/sliding equipment manufacturer's specifications. Please contact the diving/sliding equipment manufacturer for their specifications.





Java  
Classic Ocean Blue

Fiji  
Classic Sapphire Blue



Key West  
Classic Sapphire Blue

## Laguna

**14' x 30'**

Depth: 3' 6" to 6'

Ships from CA, FL, IA, LA, NC,  
OK, KN, TN, WV



## Laguna Deluxe

**14' x 30'**

Depth: 4' to 6'

Spa: 3'

Ships from CA, FL, NC, OK, KN,  
TN, WV



## Synergy

**16' x 40' 2"**

Depth: 3' 10" to 6' 3"

Ships from IA, NC, TN



## Vista Isle

**12' x 28'**

Depth: 3' 6" to 5' 10"

Ships from FL, NC





Laguna  
Classic Shale Gray



Laguna Deluxe  
Classic Ocean Blue



Synergy  
Classic Ocean Blue

## Jamaica

**9' 10" x 19' 9"**

Depth: 3' 2" to 5'

Ships from CA, FL, LA, NC, OK,  
KN, WV



## St. Lucia

**12' 3" x 23' 11"**

Depth: 3' 6" to 5'

Ships from CA, FL, LA, NC, KN,  
TN, WV



## Valencia

**14' 4" x 27' 7"**

Depth: 3' 7" to 5' 10"

Ships from CA, FL, LA, NC, KN,  
OK, WV





St. Lucia  
Classic Shale Gray



Valencia  
Classic Ocean Blue

## Mystic

**9' 8" x 9' 8"**  
 Depth: 3' 4"

Ships from FL, LA, NC, OK, KN,  
 TN, WV



## Mystic Spillover

**9' 8" x 10' 6"**  
 Depth: 3' 4"

Ships from FL, LA, NC, OK, KN,  
 TN, WV



## Regal

**9' 8" x 7' 8"**  
 Depth: 3' 4"

Ships from CA, FL, IA, LA, NC,  
 OK, KN, WV



## Regal Spillover

**9' 8" x 8' 6"**  
 Depth: 3' 4"

Ships from CA, FL, IA, LA, NC,  
 OK, KN, WV





Mystic Spillover  
Whisper White Standard Gel Coast

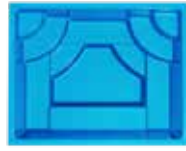


Regal  
Classic Ocean Blue

## Royal

**9' 8" x 7' 8"**  
 Depth: 3' 4"

Ships from CA, FL, IA, LA, NC,  
 OK, KN, TN, WV



## Royal Spillover

**9' 8" x 8' 6"**  
 Depth: 3' 4"

Ships from CA, FL, IA, LA, NC,  
 OK, KN, TN, WV



## Shasta

**6' 11" x 6' 11"**  
 Depth: 3'

Ships from CA, FL, LA, NC, OK,  
 KN, TN, WV



## Shasta Spillover

**6' 11" x 7' 9"**  
 Depth: 3'

Ships from CA, FL, LA, NC, OK,  
 KN, TN, WV







Royal Spillover  
Classic Ocean Blue

Shasta Spillover  
Classic Ocean Blue



Royal Spa  
Classic Sapphire Blue

## Genesis/Synergy Semicircle Side

**9' 4" × 16' 6"**  
Depth: 10"

Ships from IA, LA, NC, TN, WV



## Hermosa

**5' 9" × 9' 8"**  
Depth: 10"

Ships from FL, NC, OK, KN, WV



## Rectangle

**7' 8" × 15' 8"**  
Depth: 10"

Ships from FL, IA, NC, OK, KN,  
TN, WV



## Semicircle

**8' 4" × 16'**  
Depth: 10"

Ships from CA, IA, LA, NC, OK,  
KN, TN, WV





Genesis/Synergy Semicircle Side  
Night Sky Crystite Classic



Rectangle Tanning Ledge  
Crystite Classic Ocean Blue



Semicircle Tanning Ledge  
Crystite Crystal Sapphire Blue





# Your Way: Features and Customization

After selecting a shape and size, there are countless other ways to customize your Latham pool.

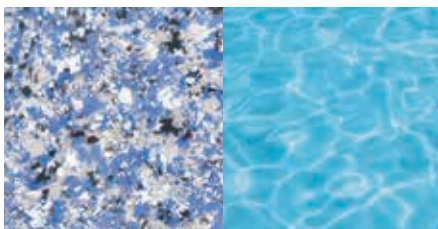
What color complements the space? Tiling? Mosaics? What should you add? What about some LED highlights for evening swims or the soothing sounds of a water feature for relaxation?

Latham will partner with you to customize a pool that works with your lifestyle. We have built thousands of pools that are custom-designed to fit each individual backyard. We know how to create a pool that is just right for you.

The color and finish of your Latham pool have a huge impact on how the pool looks and how well it complements the rest of your backyard. Make it a work of art! Latham offers a variety of exclusive colors and finishes along with standard gel coats to help make your pool truly your own. And now you can enjoy the radiance of our exclusive finishes, adding an extra sparkle to your pool.

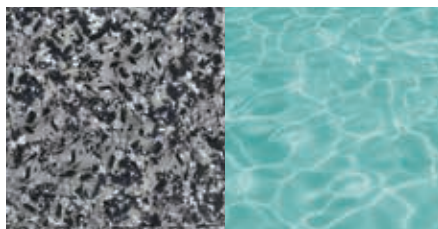
## Sapphire Blue

**Crystite Classic**



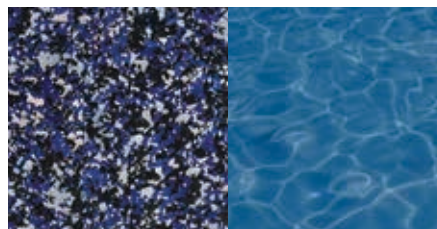
## Shale Gray

**Crystite Classic**



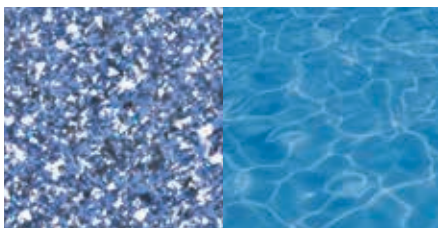
## Night Sky

**Crystite Classic**



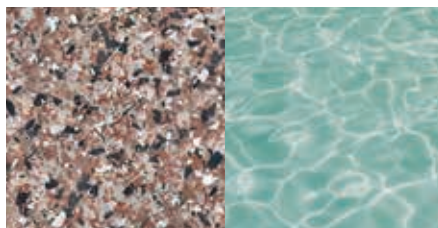
## Ocean Blue

**Crystite Classic**



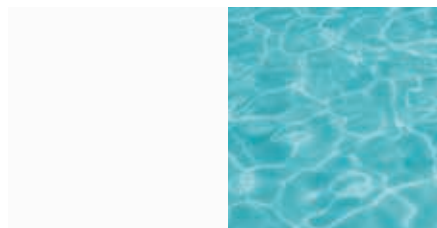
## Coastal Bronze

**Crystite Classic**



## Whisper White

**Standard Gel Coat**



## Sapphire Blue

**Crystite Crystal**



## Coastal Bronze

**Crystite Crystal**



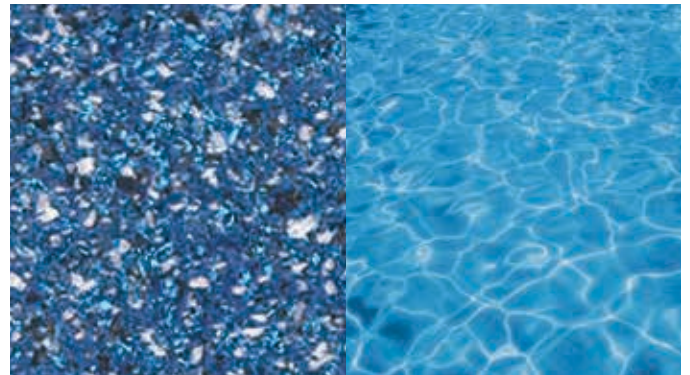
## Shale Gray

**Crystite Crystal**



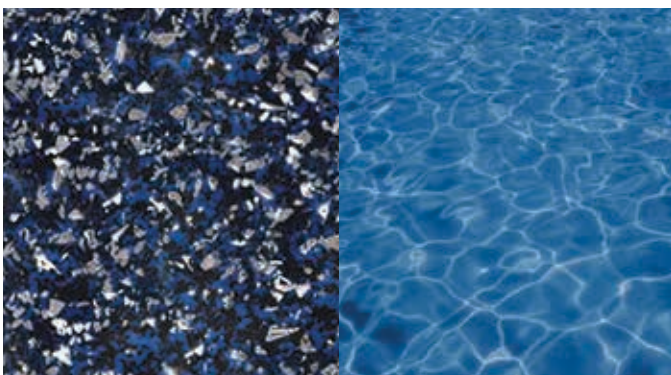
## Ocean Blue

**Crystite Crystal**



## Night Sky

**Crystite Crystal**



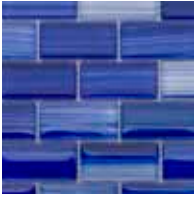
## Pearl White

**Crystite Crystal**



## Monet Series

### Paradise



Bright azure and cerulean glide together in a beautiful blue mix

MS-1284  
6x6 (1x2) – Waterline  
MS-1184  
2x2 (1x1) – Inlaid

### Water Lilies



Reflections of light blues, grays and ocean blue converge like artwork

MS-1281  
6x6 (1x2) – Waterline  
MS-1181  
2x2 (1x1) – Inlaid

### Sailboat



A perfect harmony of blues and browns converging in striking striated colors

MS-1286  
6x6 (1x2) – Waterline  
MS-1186  
2x2 (1x1) – Inlaid

### Stormy

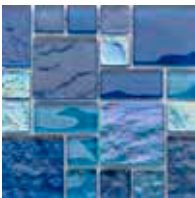


Bands of Onyx and Tiger's Eye stack together in dusky deep layers

MS-1285  
6x6 (1x2) – Waterline  
MS-1185  
2x2 (1x1) – Inlaid

## Night Life Series

### Ballad



Iridescent and opaque blue squares and rectangles mix in a sweet song of bliss

NL-831  
6x6 (Random Block) – Waterline  
NL-1131  
2x2 (1x1) – Inlaid

### Galant



Shiny blues in sparkling hues converge in perfect harmony like waves on a summer day

6x6 (Random Block) – Waterline  
NL-1132  
2x2 (1x1) – Inlaid

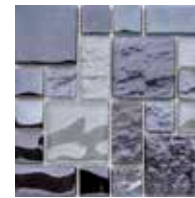
### Melody



Speckled crystal and twilight tones shine in this neutral mix

NL-838  
6x6 (Random Block) – Waterline  
NL-1138  
2x2 (1x1) – Inlaid

### Soul



Deep obsidian and smoky quartz twist together with sparks of silver

NL-834  
6x6 (Random Block) – Waterline  
NL-1134  
2x2 (1x1) – Inlaid

## Radiant Series

### Glacier



A striking combination of bold metallics and deep blues

DS-1137  
6x6 (1x2) – Waterline  
DS-2237  
2x2 – Inlaid



## Abyss Series

### Tikal



Shades of marbled blues and browns rolling together reminiscent of waves crashing on the shore

AY-624BNS  
6x6 (Bullnose) – Waterline  
AY-224  
2x2 – Inlaid

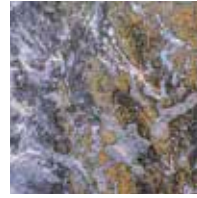
### Port Royal



Deep navy and azure splash together to create a deep-water fantasy

AY-620BNS  
6x6 (Bullnose) – Waterline  
AY-220  
2x2 – Inlaid

### Alexandria



Midnight blues and rich warm hues interlock together in a maritime masterpiece

AY-623BNS  
6x6 (Bullnose) – Waterline  
AY-223  
2x2 – Inlaid

## Italian Series

### Firenze



Clouds of baby blues wisp and flow in this Tuscan inspired tile

IS-238  
6x6 (Bullnose) – Waterline  
2x2 – Inlaid

### San Marino



Rich browns and blues create texture for a historical feel

IS-634BNS  
6x6 (Bullnose) – Waterline  
IS-234  
2x2 – Inlaid

### Naples



Sun-drenched sandy and blue tones merge and meld in perfect harmony

IS-637BNS  
6x6 (Bullnose) – Waterline  
IS-237  
2x2 – Inlaid

### Milan



Luxurious browns and tans intertwine to evoke rich depth and elegance

IS-635BNS  
6x6 (Bullnose) – Waterline  
IS-235  
2x2 – Inlaid



## LED Lighting

Lighting is one of many pool options that will elevate your enjoyment. At night, LED lights illuminate your pool and can turn an evening swim into an extraordinary experience.

### **Color Control**

Controls color, speed, brightness and modes.

### **Memory Recall**

Remembers the last color, speed and brightness.

### **Auto Sync**

Automatically syncs your lights.

### **Wireless Handheld Remote Control**

Included with all LED lighting.

### **Wi-Fi Compatibility**

Provides optional connectivity via smartphone or tablet.

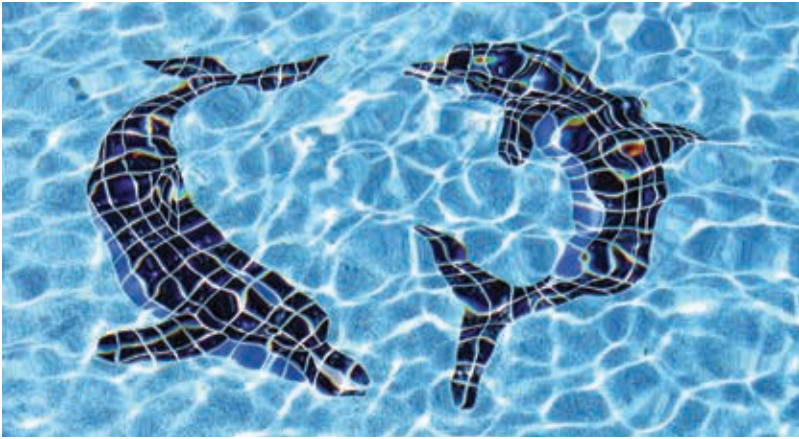
### **Compatibility**

Compatible with water features and perimeter lighting.

### **Wattage**

Delivers 50 watts to support six 4-wire lights.

Tiles and mosaics are an elegant way to upgrade the design of your Latham pool. Choose between glass and ceramic tile in a multitude of patterns that will add charm and style. Our inlaid tiles emphasize steps and seats for safety, while adding a striking accent to each pool.



Water features add a luxurious touch of personalization. Your stress will fade away as you relax to the soothing sounds of a bubbling fountain or a cascading waterfall.



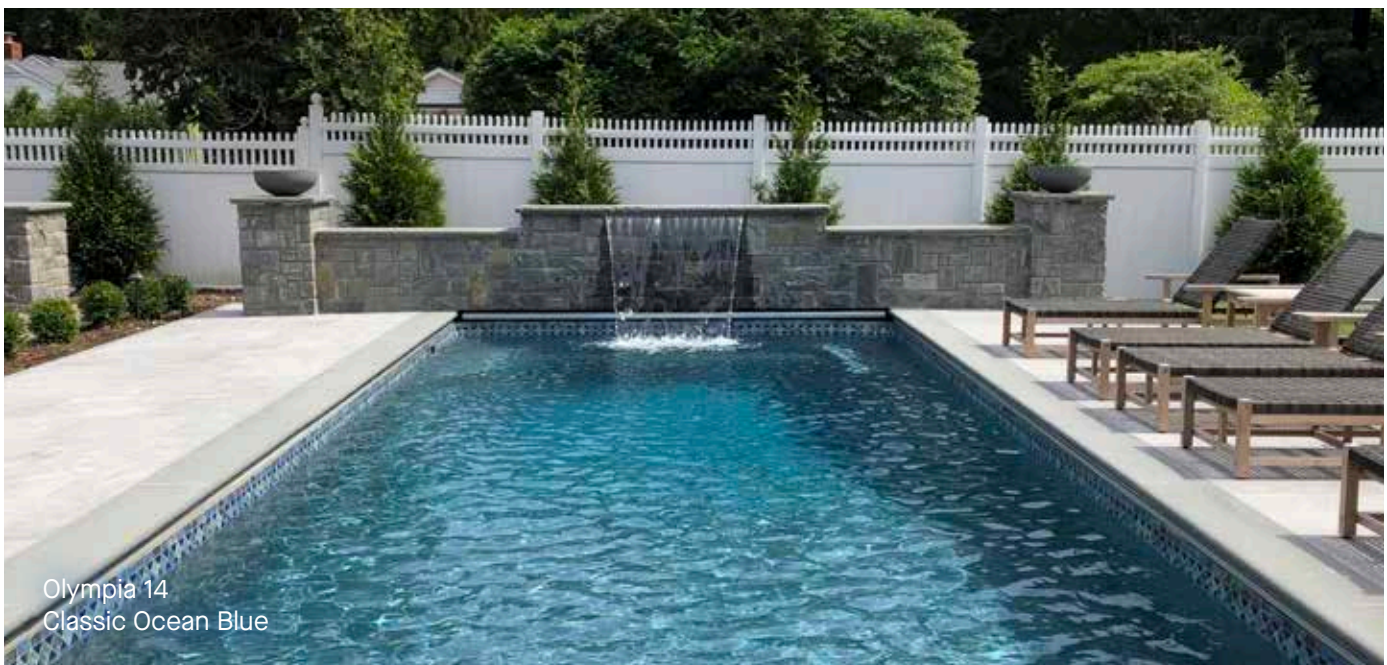
## Cascades

Originating from the coping of your pool, cascades are gentle waterfalls and are available in a range of sizes and arrangements.

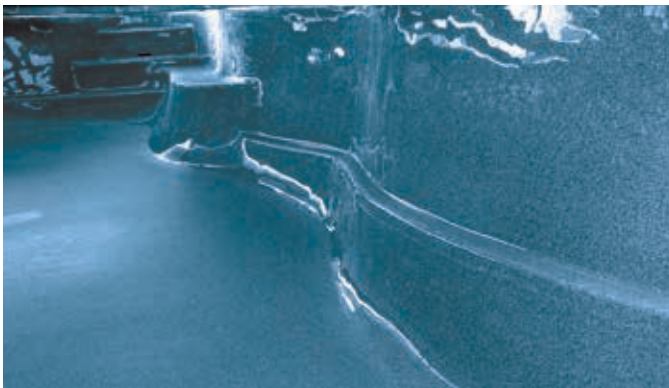


## Bubblers

Bubblers create an extraordinary fountain effect for additional fun and relaxation.



Latham safety features within your pool can provide a convenient foothold, a place to rest, and an easier way to get in or out of the water. These make fun times safer for everyone.



### Safety Ledges

Safety Ledges provide a comfortable foothold below the waterline.



### Textured Steps and Seats

Providing a sure footing on the smooth surface of your fiberglass pool, textured seats and steps make it safer and easier to get in and out of the water.







# Your Facts: Safety and Education

A Latham pool is a source of joy—a special place where you, your family and friends share love, camaraderie and good times. It should be worry-free.

We believe that the more you know, the more comfortable you'll be buying and living with your Latham pool. Safety accessories help you enjoy your pool while it is being used and help to keep you from worrying when it's not.

Learn about safety, the benefits of fiberglass pools and how to purchase the center of your backyard lifestyle.

## We've got you covered

Since 1990, Coverstar has provided quality automatic pool covers for all types of pools across North America. With a new pool, or an existing pool, it is important to consider protecting your loved ones and your investment. Coverstar offers industry-leading design applications that allows maximum design flexibility without sacrificing safety. Our covers are UL listed Automatic Safety Covers that meet ASTM F1346-91 standards.

### Engineering: The best in the industry

The automatic safety cover (ASC) has superior engineering based on more than 40 years of field experience. System reliability and the following high-quality components are compelling benefits that make it the preferred choice of pool owners everywhere.



#### Waterproof Motor

The ASC motor's hardened stainless-steel shaft and oil-bathed gears virtually eliminate motor problems. It is also sealed against water by the original motor manufacturer.



#### Durable Mechanism

Heavy-duty, stainless-steel or marine-grade anodized aluminum components allow the ASC mechanism to endure harsh environments, giving you many years of reliable service.



#### Tracks and Sliders

The heavy-duty sliders are the strongest in the industry. A dedicated slide channel prevents binding and stress on the mechanism and increases system reliability.



#### PowerFlex Rope

PowerFlex rope behaves like a shock absorber that allows it to be more forgiving and self-adjusting during operation.



#### Exclusive Heat-Sealed Webbing

This proprietary system feature is a marked improvement over the common webbing attachment method and provides substantially longer webbing life and improved operation of the cover.



Swimming pool covers from Latham literally add a layer of safety to your pool, while simultaneously blocking debris and saving you money. Our durable covers are child-proof, pet-proof and wildlife-proof, so playtime comes with peace of mind—and they’re backed by some of the best warranties in the business.

## Heavy-Duty Fabric: 10 Standard Colors

The heavy-duty vinyl fabric provides optimal ultraviolet, chemical and mildew resistance. Superior fabric strength, tear resistance and abrasion resistance are enhanced through the extruded coating process and closed polyester weave.

Fabric Colors



## Manual Mesh and Solid Safety Covers

Mesh swimming pool covers provide excellent protection from debris and contain extremely fine openings, creating a unique texture and appearance. Mesh options can be more affordable up front, but may require more cleaning and maintenance down the road.



Smart pool owners consider safety first, and take specific steps to ensure that their family, friends and guests are knowledgeable about the safe and sensible use of their pool.

There are several best practices that are essential to safe pool operation:

- Ensure that the pool is kept in good repair and is not used when there is a missing or broken component.
- Anyone under the influence of alcohol, drugs or stimulants that would impair their abilities or judgment should not use the pool.
- Ensure that the pool is protected by appropriate barriers to unsupervised entry, including fencing with self-latching gates, covers, alarms, etc.

There are a number of items that are essential for pool safety, all of which should be installed in accordance with the manufacturer's instructions as well as state and local statutes:

- Safety ropes should remain in place at all times.
- "No Diving" signs should be placed appropriately and in accordance with directions.
- Latham provides an area sign which must be permanently and conspicuously affixed in the pool area.
- You must have means of entry into and exit from the pool.
- You must have a primary barrier in place to prevent children and pets from reaching the pool unsupervised. That can be an automatic safety cover or fence with self-latching gates depending on local regulations.
- You must have approved drain covers to protect against suction entrapment.
- You must have the minimum required inlets and returns to ensure proper water circulation.
- Appropriate in-pool lighting should be used at night.
- Diving boards and slides require minimum depths and distances and must be installed in strict compliance with the manufacturer's specifications. If your pool is labeled "Non-diving," do not install diving equipment.

Several books and other items about pool safety are included with each Latham pool. Carefully read these and make them accessible to those who use your pool:

- Pool Owners' Safety Book
- PHTA "Sensible Way" Book
- Limited Lifetime Warranty
- "Children Aren't Waterproof" Pamphlet
- "Non-diving" Label
- Additional Warning Labels
- Use and Care Manual
- Safety Sign Installation Sheet
- Additional Signs and Labels

Be sure your installer supplies you with all of the safety information that accompanies your pool and installs the warning stickers and area sign where they can be clearly visible to all who use the pool.

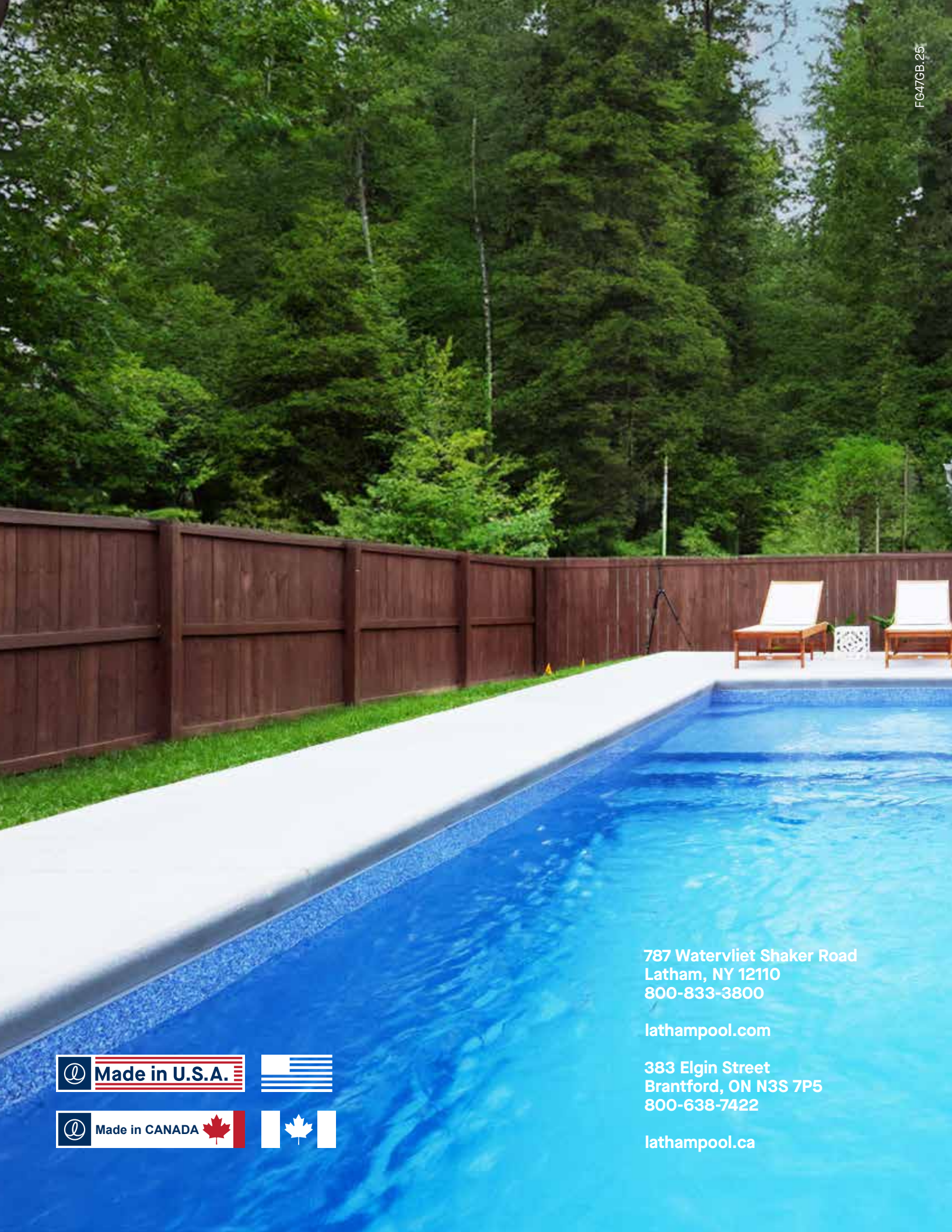
We also recommend that you contact your local American Red Cross for available CPR and other vital safety programs.

NOTICE: The manufacturer stands behind every product they produce pursuant to those representations which are stated in the written warranties. Your dealer/builder/contractor is an independent businessperson and not an agent or employee of the manufacturer. The manufacturer cannot and does not accept any responsibility for any representations, statements or contracts made by any dealer/builder/contractor.

The specifications in this brochure were believed to be true at the time of printing. However, specifications, standard equipment and options are subject to change without notice.

The manufacturer does not manufacture slides, diving boards, or any other diving equipment. Any use of such equipment must be in strict compliance with the equipment manufacturer's specifications, Pool and Hot Tub Alliance (PHTA) Standards, as well as local building codes and regulations.

In some pictures, the safety line rope and floats, and safety signage have been removed from the pool for photographic purposes. The safety line should be permanently attached at all times. We also urge you to use handrails and grab rails in accordance with the PHTA Standards.



787 Watervliet Shaker Road  
Latham, NY 12110  
800-833-3800

[lathampool.com](http://lathampool.com)

383 Elgin Street  
Brantford, ON N3S 7P5  
800-638-7422

[lathampool.ca](http://lathampool.ca)

