

Latham Grand

Fiberglass Pools

latham

NEW IN 2025 Apollo 14
 14' x 32'
 Depth: 3' 7" to 6' 1"

NEW IN 2025 Ariel 16
 16' x 40'
 Depth: 3' 6" to 7' 4"

Astoria 14
 14' x 35'
 Depth: 3' 6" to 6' 6" | Spa: 3'

Astoria 16
 15' 10" x 40'
 Depth: 3' 6" to 7' | Spa: 3'

Barcelona
 16' x 37' 10"
 Depth: 3' 6" to 7'

Claremont
 14' x 33'
 Depth: 3' 7" to 5' 4"

Corinthian 12
 12' x 25'
 Depth: 3' 6" to 5' 5"

Corinthian 14
 14' x 30'
 Depth: 3' 6" to 6'

Corinthian 16
 15' 10" x 40'
 Depth: 3' 6" to 7'

Delray
 11' 10" x 25' 5"
 Depth: 4' 6"

Enchantment 9.17
 9' 1" x 17' 5"
 Depth: 4' 9"

Enchantment 9.21
 9' 1" x 20' 7"
 Depth: 4' 9"

Enchantment 9.24
 9' 1" x 23' 10"
 Depth: 4' 9"

Kingston
 16' x 38'
 Depth: 3' 6" to 5' 10"

Lake Shore
 16' x 33'
 Depth: 3' 7" to 5' 5"

Milan
 10' x 16'
 Depth: 4'

Monaco
 16' x 40'
 Depth: 3' 6" to 8'

Olympia 12
 12' x 26'
 Depth: 3' 6" to 5' 8"

Olympia 14
 14' x 30'
 Depth: 3' 6" to 6'

Olympia 16
 16' x 35'
 Depth: 3' 6" to 6' 4"

Type 1 Diving Pool*

Fiberglass Pools

Rectangle

Latham Grand

Sirius

12' x 24'
Depth: 3' 6" to 5' 6"



St. Thomas

14' x 31' 6"
Depth: 3' 7" to 7'



Tuscan 11.20

11' 1" x 20' 3"
Depth: 3' 11" to 5' 2"



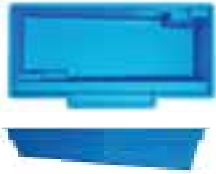
Tuscan 13.24

12' 10" x 23' 7"
Depth: 3' 11" to 5' 5"



Tuscan 14.27

13' 9" x 26' 10"
Depth: 3' 11" to 5' 9"



Tuscan 14.30

13' 9" x 30' 1"
Depth: 3' 11" to 5' 11"



Tuscan 14.40

13' 9" x 39' 11"
Depth: 3' 7" to 6' 2"



Fiberglass Pools

Freeform

Aruba

11' x 22'
Depth: 3' 6" to 5'



Axiom 12

12' x 26'
Depth: 4' to 5'



Axiom 12 Deluxe

12' x 26'
Depth: 3' to 4' 7" | Spa: 3'



Axiom 14

14' x 30'
Depth: 4' to 6'



Axiom 16

16' x 35'
Depth: 4' 6" to 6' 6"



Bay Isle

14' 6" x 29' 10"
Depth: 3' to 6' 6"



Bermuda

12' x 26'
Depth: 3' 6" to 5' 6"



Cambridge

16' x 36'
Depth: 3' 6" to 7'



Scan the QR code
for full interactive
brochures.



Cancun

16' x 35'
Depth: 3' 6" to 6' 6"



Cancun Deluxe

16' x 35'
Depth: 4' 3" to 6' 6" | Spa: 3'



Cape Cod

14' x 31'
Depth: 3' 6" to 6'



Caribbean

16' x 40'
Depth: 3' 6" to 6' 6"



NEW
IN 2025

Coral 16

16' x 30' 10"
Depth: 3' 6" to 6' 11"



Coronado

15' x 34'
Depth: 3' 6" to 6' 6"



Fiji

15' x 34'
Depth: 3' 6" to 6'



Genesis

16' x 40' 2"
Depth: 3' 10" to 8' 6"



Type 1 Diving Pool*

Java

12' x 26' 9"
Depth: 3' 6" to 5' 5"



Key West

12' x 25' 7"
Depth: 3' 7" to 6'



Laguna

14' x 30'
Depth: 3' 6" to 6'



Laguna Deluxe

14' x 30'
Depth: 4' to 6' | Spa: 3'



Synergy

16' x 40' 2"
Depth: 3' 10" to 6' 3"



Vista Isle

12' x 28'
Depth: 3' 6" to 5' 10"



Lengths, widths, and depths may vary up to 3%. Measurements are to widest point on each side of the outside edge. Unless indicated otherwise, pools are non-diving and use of diving equipment is prohibited.

Fiberglass Pools

Kidney

Latham Grand

Jamaica

9' 10" x 19' 9"
Depth: 3' 2" to 5'



St. Lucia

12' 3" x 23' 11"
Depth: 3' 6" to 5'



Valencia

14' 4" x 27' 7"
Depth: 3' 7" to 5' 10"



Fiberglass Pools

Spas and Tanning Ledges

Mystic

9' 8" x 9' 8"
Depth: 3' 4"



Mystic Spillover

9' 8" x 10' 6"
Depth: 3' 4"



Regal

9' 8" x 7' 8"
Depth: 3' 4"



Regal Spillover

9' 8" x 8' 6"
Depth: 3' 4"



Royal

9' 8" x 7' 8"
Depth: 3' 4"



Royal Spillover

9' 8" x 8' 6"
Depth: 3' 4"



Shasta

6' 11" x 6' 11"
Depth: 3'



Shasta Spillover

6' 11" x 7' 9"
Depth: 3'



Genesis/
Synergy

9' 4" x 16' 6"
Depth: 10"



Hermosa

5' 9" x 9' 8"
Depth: 10"



Rectangle

7' 8" x 15' 8"
Depth: 10"



Semicircle

8' 4" x 16'
Depth: 10"



*Diving/sliding equipment shall be designed for swimming pools and shall be installed in accordance with the diving/sliding equipment manufacturer's specifications. Please contact the diving/sliding equipment manufacturer for their specifications.
© Latham Pool Products, Inc. 2025. All rights reserved.

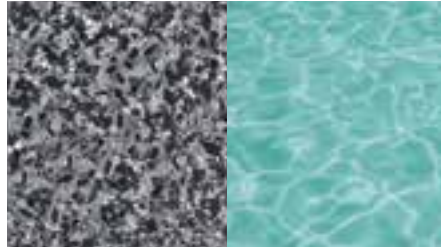
Sapphire Blue

Crystite Classic



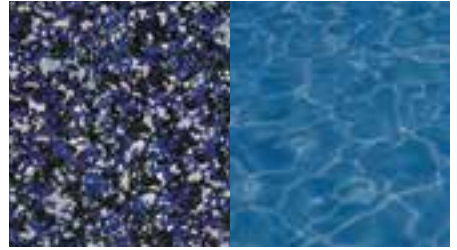
Shale Gray

Crystite Classic



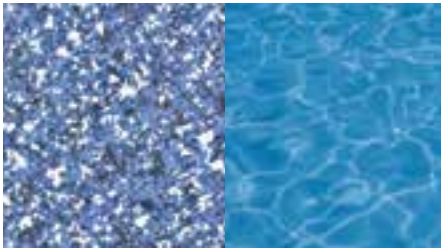
Night Sky

Crystite Classic



Ocean Blue

Crystite Classic



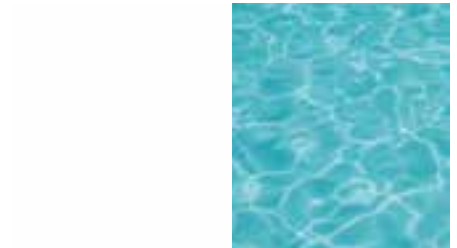
Coastal Bronze

Crystite Classic



Whisper White

Standard Gel Coat



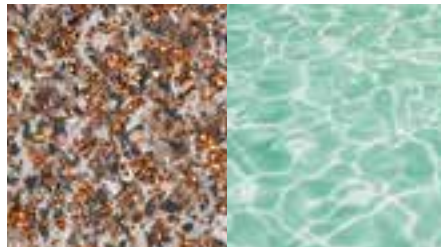
Sapphire Blue

Crystite Crystal



Coastal Bronze

Crystite Crystal



Shale Grey

Crystite Crystal



Ocean Blue

Crystite Crystal



Night Sky

Crystite Crystal



Pearl White

Crystite Crystal



Patent pending for all Crystite Classic and Crystite Crystal finishes.

Monet Series

Paradise



Bright azure and cerulean glide together in a beautiful blue mix
 MS-1284: 6x6 (1x2) – Waterline
 MS-1184: 2x2 (1x1) – Inlaid

Water Lilies



Reflections of light blues, grays and ocean blue converge like artwork
 MS-1281: 6x6 (1x2) – Waterline
 MS-1181: 2x2 (1x1) – Inlaid

Sailboat



A perfect harmony of blues and browns converging in striking striated colors
 MS-1286: 6x6 (1x2) – Waterline
 MS-1186: 2x2 (1x1) – Inlaid

Stormy



Bands of Onyx and Tiger's Eye stack together in dusky deep layers
 MS-1285: 6x6 (1x2) – Waterline
 MS-1185: 2x2 (1x1) – Inlaid

Night Life Series

Ballad



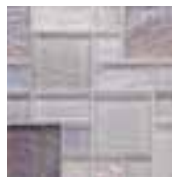
Iridescent and opaque blue squares and rectangles mix in a sweet song of bliss
 NL-831: 6x6 (Random Block) – Waterline
 NL-1131: 2x2 (1x1) – Inlaid

Galant



Shiny blues in sparkling hues converge in perfect harmony like waves on a summer day
 NL-832: 6x6 (Random Block) – Waterline
 NL-1132: 2x2 (1x1) – Inlaid

Melody



Speckled crystal and twilight tones shine in this neutral mix
 NL-838: 6x6 (Random Block) – Waterline
 NL-1138: 2x2 (1x1) – Inlaid

Soul



Deep obsidian and smoky quartz twist together with sparks of silver
 NL-834: 6x6 (Random Block) – Waterline
 NL-1134: 2x2 (1x1) – Inlaid

Italian Series

Firenze



Clouds of baby blues wisp and flow in this Tuscan inspired tile
 IS-638 6x6 (Bullnose) – Waterline
 IS-238: 2x2 – Inlaid

San Marino



Rich browns and blues create texture for a historical feel
 IS-634: 6x6 (Bullnose) – Waterline
 IS-234: 2x2 – Inlaid

Naples



Sun-drenched sandy and blue tones merge and meld in perfect harmony
 IS-637: 6x6 (Bullnose) – Waterline
 IS-237: 2x2 – Inlaid

Milan



Luxurious browns and tans intertwine to evoke rich depth and elegance
 IS-635: 6x6 (Bullnose) – Waterline
 IS-235: 2x2 – Inlaid

Abyss Series

Tikal



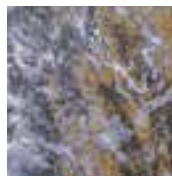
Shades of marbled blues and browns rolling together reminiscent of waves crashing on the shore
 AY-624: 6x6 (Bullnose) – Waterline
 AY-224: 2x2 – Inlaid

Port Royal



Deep navy and azure splash together to create a deep-water fantasy
 AY-620: 6x6 (Bullnose) – Waterline
 AY-220: 2x2 – Inlaid

Alexandria



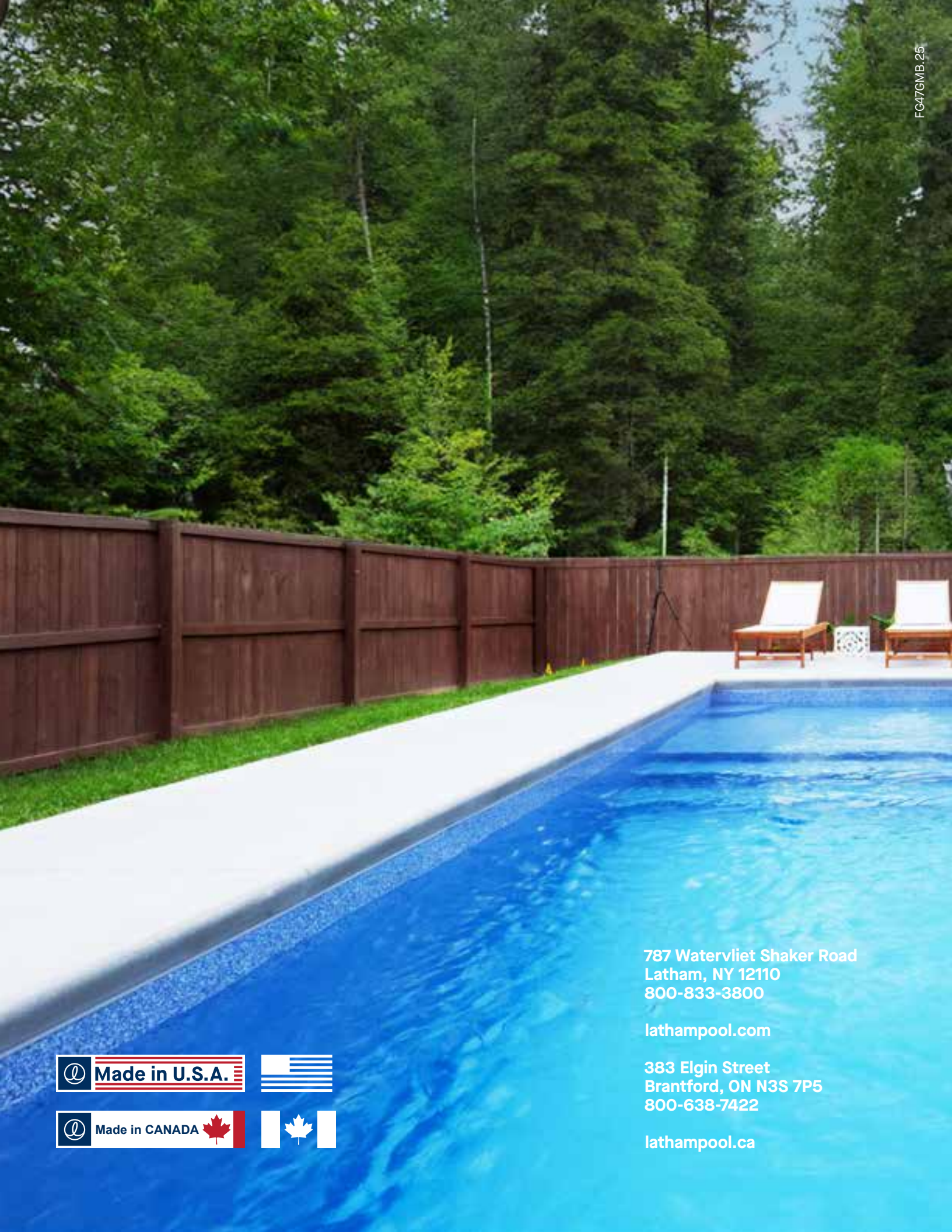
Midnight blues and rich warm hues interlock together in a maritime masterpiece
 AY-623: 6x6 (Bullnose) – Waterline
 AY-223: 2x2 – Inlaid

Radiant Series

Glacier



A striking combination of bold metallics and deep blues
 DS-1137: 6x6 (1x2) – Waterline
 DS-2237: 2x2 – Inlaid



787 Watervliet Shaker Road
Latham, NY 12110
800-833-3800

lathampool.com

383 Elgin Street
Brantford, ON N3S 7P5
800-638-7422

lathampool.ca

